

Land Managers And Geocachers: The Potential For Impact Goes Both Ways

Dianna Fisher

Jo Tynon

Forest Ecosystems & Society

College of Forestry,

Oregon State University

What Geocaching is...

Geocaching is a real-world, outdoor treasure hunting game using GPS-enabled devices

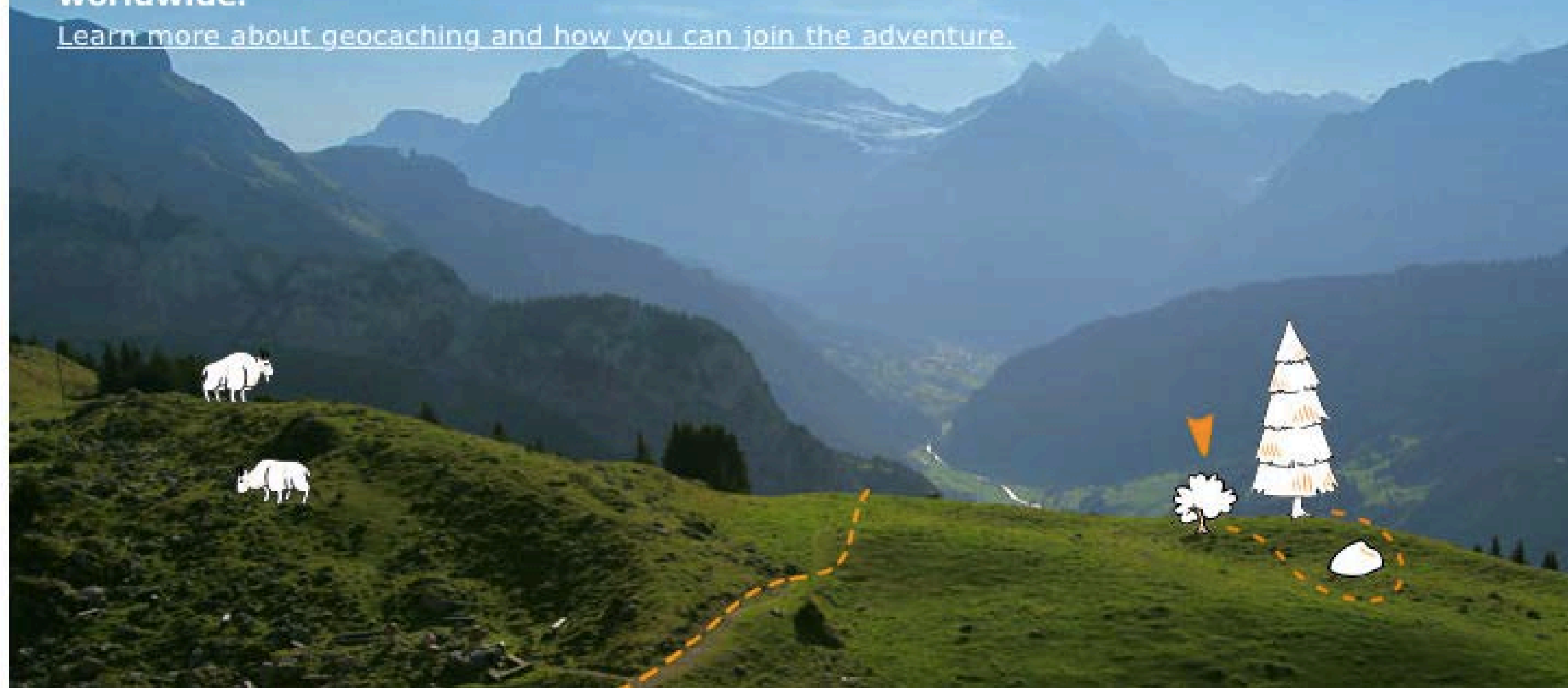


How Geocaching started

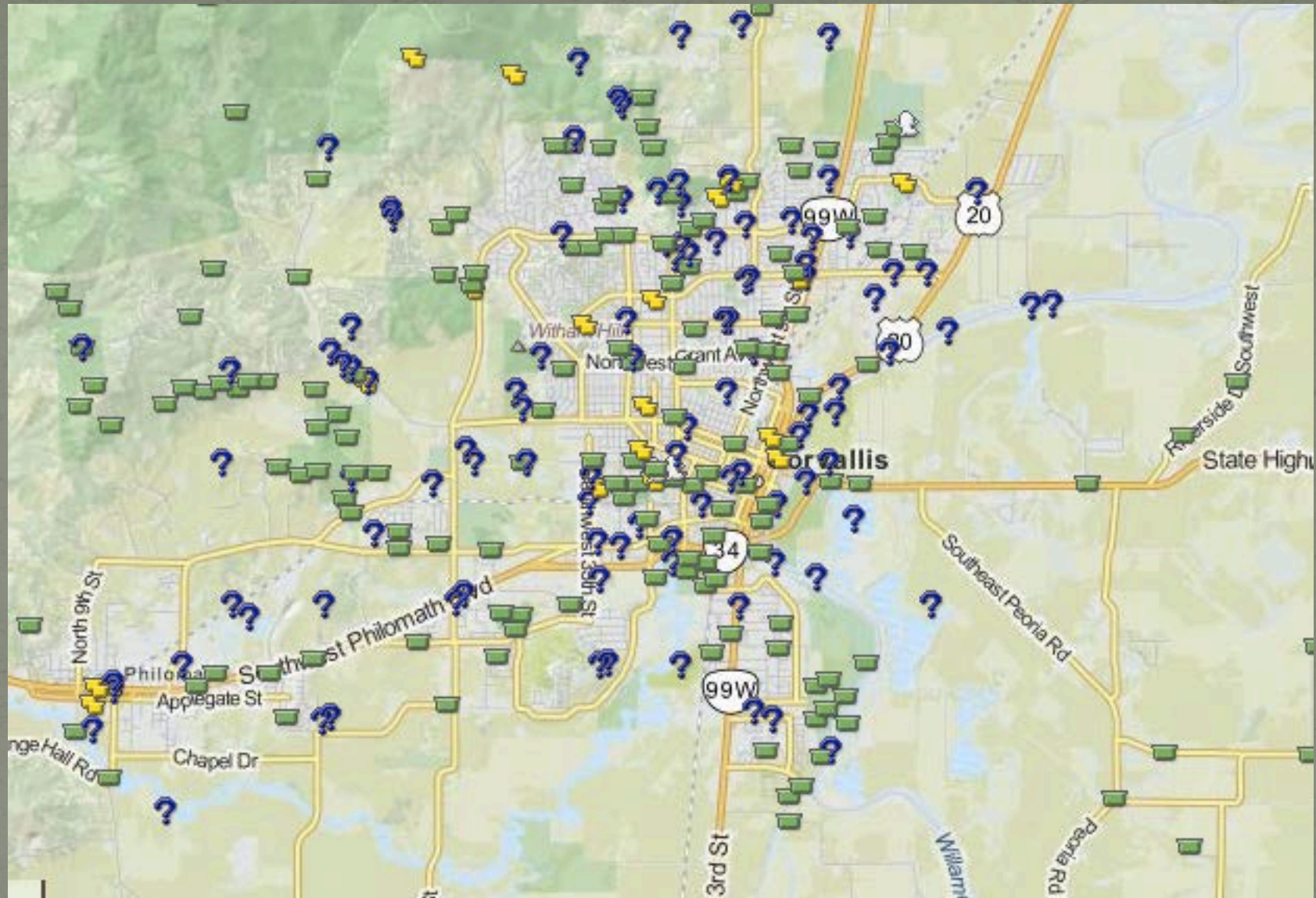


Geocaching is the real-world treasure hunt that's happening right now, all around you. There are 2,571,905 active geocaches and over 6 million geocachers worldwide.

[Learn more about geocaching and how you can join the adventure.](#)

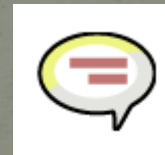
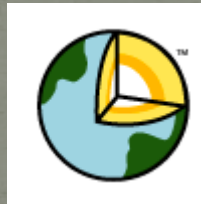


Corvallis



Types of Geocaches

- There are 12 different types of Geocaches broken down into different categories



Geocaches With Containers

Traditional Cache

Multi-Cache

Mystery Cache

Letterbox hybrid

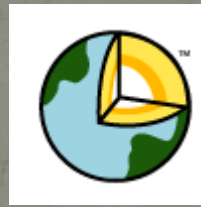
Ape Cache

Whereigo Cache



Geocaches Without Containers

- Virtual
- Earthcache
- Locationless
- Whereigo Cache *
- Webcam Cache



Event Geocaches

- Event
- CITO



Policies



Questions for Land Managers

What is the policy?

Who made the policy?

What information/data was used to make the policy?

Was the policy proactive or reactive?

Was there any consultation done with the geocaching community?

Guideline for hiding

- All local laws and documented land management policies apply.
- You assure us that you have the landowner's and/or land manager's permission before you hide any geocache, whether placed on private or public property.
- Geocaches are never buried, neither partially nor completely.
- Geocache placements do not damage, deface or destroy public or private property.
- Wildlife and the natural environment are not harmed in the pursuit of geocaching.
- Geocaches are not placed in restricted, prohibited or otherwise inappropriate locations.
- Physical elements of different geocaches should be at least 0.10 miles (528 ft or 161 m) apart.
- Geocaches are allowed in space, on other planets and in spacecraft.

Code of Ethics

- . Minimize my and others' impact on the environment.
- . Whenever possible, Leave No Trace.
- . Obtain the best possible coordinates for your cache to reduce unwarranted wear and tear to the area.
- . Do not disrupt the cache area or otherwise mark the hiding spot.

Working **with** the Geocaching Community

- Event Caches
- **CITO (Cache in, Trash out)**

25

Aland Islands
Australia (2)
Austria (9)
Bahrain
Belgium (3)
Bermuda
Brazil (2)
Bulgaria
Alberta
British
Columbia (8)
Manitoba (3)
Nova Scotia (3)
Ontario (5)
Prince Edward
Island
Quebec (6)
Saskatchewan
Chile
Czech Republic
(24)
Denmark (8)
Finland (14)
France (6)
Germany (107)
Guam

Hong Kong
Hungary
Ireland (2)
Italy (4)
Japan
Latvia
Lithuania
Luxembourg
Mexico (2)
Netherlands
(10)
New Zealand (8)
Norfolk Island
Norway (9)
Poland (10)
Portugal (13)
Puerto Rico (2)
Qatar
Russia (2)
Saudi Arabia
Singapore
Slovakia (4)
Slovenia
South Africa (4)
South Korea
Spain (9)
Sweden (14)
Switzerland (5)
Thailand
Turkey (3)
United Kingdom

United Kingdom
(22)
Alabama (4)
Alaska (3)
Arizona (4)
Arkansas (2)
California (14)
Colorado (5)
Connecticut
Delaware (2)
Florida (12)
Georgia (9)
Idaho (4)
Illinois (5)
Indiana (2)
Iowa (7)
Kansas
Kentucky (4)
Maine (2)
Massachusetts
(4)
Michigan (8)
Minnesota (10)
Mississippi
Missouri (8)
Montana (4)
Nebraska (3)
Nevada (2)
New Hampshire
New Jersey (4)
New Mexico

New Jersey (4)
New Mexico
New York (6)
North Carolina
(4)
North Dakota
Ohio (6)
Oregon (9)
Pennsylvania (6)
Rhode Island (2)
South Carolina
(4)
South Dakota
(2)
Tennessee (6)
Texas (12)
Utah (5)
Virginia (8)
Washington (8)
West Virginia
Wisconsin (8)
Wyoming

26

Afghanistan
Australia (16)
Austria (2)
Belgium
Brazil (2)
Alberta (3)
British
Columbia (4)
Manitoba
New Brunswick
Nova Scotia
Ontario (9)
Quebec (2)
Saskatchewan
(2)
Cayman Islands
Colombia
Croatia
Czech Republic
(12)
Denmark (4)
Estonia
Finland (8)

France (16)
Germany (44)
Greece
Guadeloupe
Hungary
Ireland (3)
Italy (2)
Japan (2)
Latvia
Lithuania
Mexico
Netherlands (7)
New Zealand
(6)
Norway (12)
Poland (4)
Portugal (9)
Romania
Slovakia (3)
South Africa (4)
Spain (10)
Sweden (19)
Switzerland (2)
Turkey
United
Kingdom (17)
Alabama (2)
Alaska (2)

Arizona
Arkansas
California (9)
Colorado
Connecticut
Florida (9)
Georgia (2)
Hawaii
Idaho
Illinois (7)
Indiana (5)
Iowa (3)
Kansas (4)
Louisiana
Maryland (2)
Massachusetts
(2)
Michigan (5)
Minnesota
Montana
Nevada (2)
New Jersey
New York (4)
North Carolina
(3)
Ohio
Oklahoma (3)
Pennsylvania
(3)
South Carolina
(2)

CITO in Sacajawea State Park

Friends of Sacajawea park need our help.



Lake Arlington CITO

An event cache by [ArlingtonParksnRec](#) Event Date: 03/28/2015 [Add To Calendar](#)



Project Blue River Rescue 2015



Park Day at Wilson's Creek national Battlefield

An event cache by [Promethium](#) Event Date: 03/28/2015 [Add To Calendar](#)

Champoeg State Park

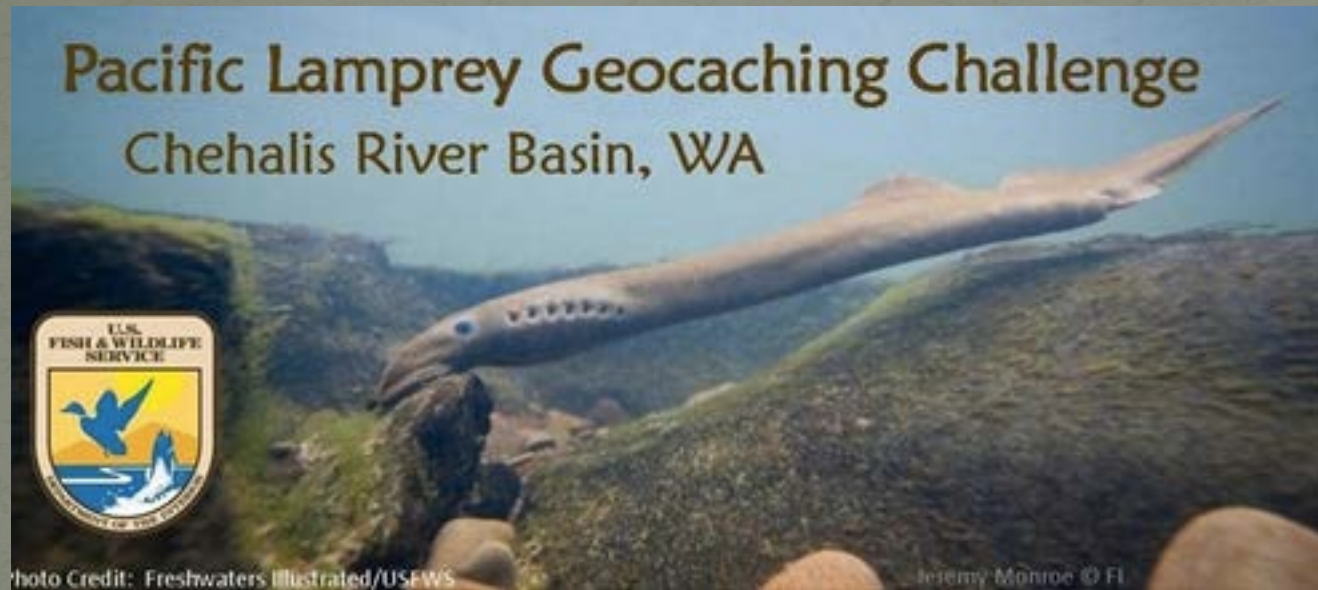


Draw attention to a new feature or program or entice new visitors

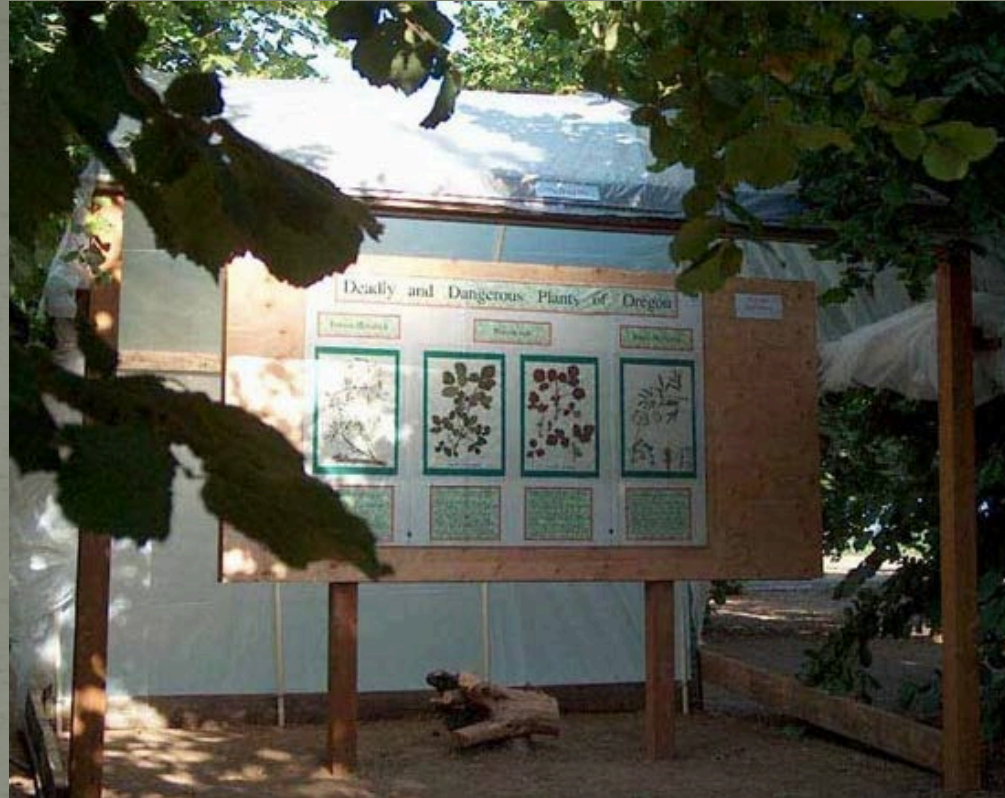
 McHenry County Illinois	<u>Cache Your Way Across McHenry County</u>	McHenry County Conservation District	15
 Kentucky	<u>Kentucky State Parks</u>	Kentucky Department of Parks	49
 North Bonneville, Washington	<u>Bonneville Bigfoots Search</u>	Bigfoot Discovery Trails Committee	10
 Georgia	<u>Georgia State Parks</u>	Georgia Department of Natural Resources	46
 Georgia	<u>Georgia History Trail</u>	Georgia Department of Natural Resources	14
 Washington D.C. area	<u>Star-Spangled Banner</u>	National Park Service	32

Using Geocaching to their advantage

Parks or other land managers become geocache hidings!
Use geocaching for education in your parks



Citizen Science



Revisit your policies

What is the policy?

Who made the policy?

What information/data was used to make the policy?

Was the policy proactive or reactive?

Was there any consultation done with the geocaching community?

Contact:

Dianna Fisher

Forest Ecosystems & Society

College of Forestry

Oregon State University

Dianna.Fisher@oregonstate.edu